

OBSERVATION OF GREY AND WHITE MATTERS

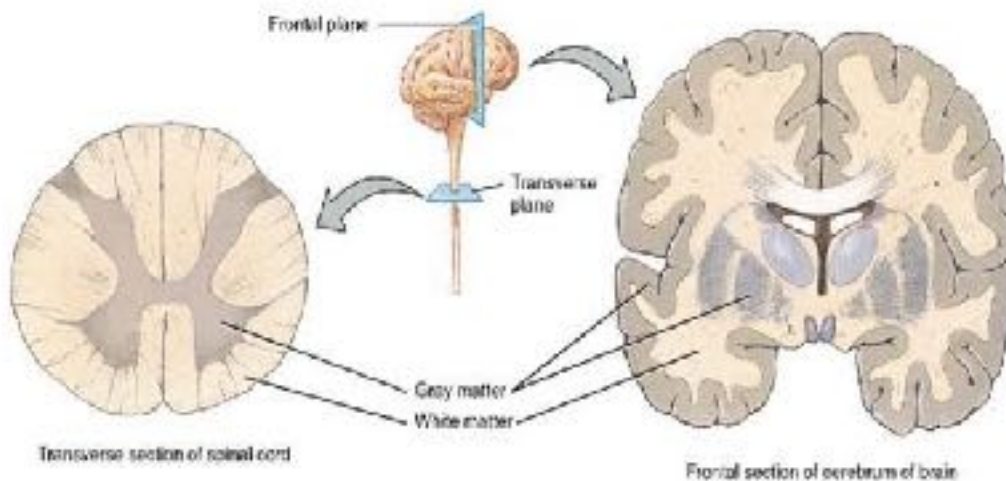


The brain is a central structure in our organism. It is organized in many areas, which play a different role. Let's take a closer look to the nerve cells.

When a brain is dissected, two colors appear : grey and white. These colors are used to define the grey matter, and the white matter.

What is the origin of the grey color? Of the white color?

A) LOCATION OF GREY AND WHITE MATTERS.



B) OBSERVATION OF GREY AND WHITE MATTERS

- Take some grey matter. Only a very few is required
 - Spread the grey matter out on a ¹microslide, using a ²cover glass in order to realize a ³smear
 - Put the microslide on the two encased boxes
 - Cover the microslide with methylene blue and wait at least 2 minutes
 - Gently rinse using distilled water (in order to avoid smear detachment)
 - Observe (x400, or x1000 with oil)
-
- Do it again with the white matter.

Make a drawing of the grey matter observation, and label it with the terms « cytoplasm », « membrane », and if visible : « nucleus ».

¹ Lame

² Lamelle

³ Frottis